



Micraft Solutions Pvt. Ltd.



**Micraft**Solutions

...because your time is precious!

# Global Technology Partner for Cloud-Enabled Transformation

Pune HQ & Global Reach | 2025

603, White Square, Hinjewadi IT Park, Phase I, Pune - 411057

+91 94040 42720 | [sales@mircraft.co.in](mailto:sales@mircraft.co.in) | [mircraft.co.in](http://mircraft.co.in) | 2025

Presented by:

Mircraft Solutions Pvt. Ltd.



# Agenda

## Our Journey to Your Success

**01 Who We Are**

---

**02 What We Do**

---

**03 How We Do It**

---

**04 Why Work With Us**

---

**05 Our AI-Powered Innovation Edge**

---

**06 Services & Expertise**

---

**07 Our Flagship Products**

---

**08 Engagement Models**

---

**09 Next Steps**





# Who We Are

## Automation-First Tech Powerhouse

At Mircraft Solutions Pvt. Ltd., we automate value creation every single day—merging Cloud, AI/ML, IoT, and Automation to help enterprises scale with precision.

We don't just build software—we deploy intelligent automation bots that cut operational costs by 40%, eliminate manual errors, accelerate decision-making, and power digital transformation across industries.



**3 Global Offices**



**100+ Employees**



**500+ Customers**



**18 Years Automating Excellence**

# What We Do...

**Automating Enterprises Through Cloud,  
AI/ML & Intelligent Digital Systems**



## Software

AI-powered applications & automation-driven development



## Infrastructure

Auto-scaling cloud servers & smart monitoring



## Analytics

ML dashboards, predictions & automated insights



## IoT

Connected devices, sensors & automated factory operations



## Workplace

Zero-touch workflows, digital tools & collaboration automation

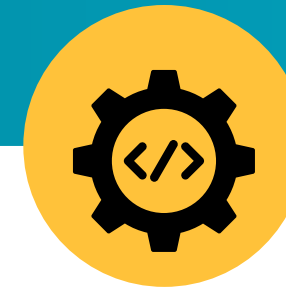


# How We Do It?

## Automated Cloud Programs for Frictionless Transformation.

We automate every stage of the cloud lifecycle—development, modernization, and management. Microsoft delivers transformation through a fully automated cloud approach—combining AI-driven development, bot-powered modernization, and intelligent ML-based management.

By embedding automation at every stage, we ensure faster builds, error-free migrations, predictive operations, and high system uptime. This unified automation model enables enterprises to scale efficiently with minimal manual intervention and management—ensuring faster delivery, zero-error migrations, and predictive, hands-free operations.



### Development

AI-assisted builds that produce self-healing, high-quality code and speed up delivery.



### Modernization

Bot-driven migrations that are 40% faster, secure, and error-free.



### Management

Autonomous monitoring with ML-based alerts for predictive maintenance and uptime.

# Trusted by Global Titans

We automate success through innovation, agility, intelligence, and empowered teams.



## AI Innovation Bots

Delivering future-ready automation with intelligent, self-learning systems.



## Auto-Agile Scaling

Rapid, flexible scaling powered by automated cloud and DevOps workflows.



## ML Intelligence Hubs

Data-driven decision centers with predictive ML insights.



## Empowered Auto-Teams

Cross-functional teams accelerated by automation for consistent, high-quality delivery.



# Our AI-Powered Innovation Edge

## AI/ML: Automating the Mircraft Edge

Mircraft uses AI and ML to automate smart decisions across the enterprise—from predictive MES bots that cut downtime by 30%, to MentorAI’s genAI-driven upskilling, to automated inventory and routing systems. We transform complex operations into efficient, automated workflows that boost performance and profitability.

### AI Innovation Areas :



#### Predictive Automation

MES bots predict issues early, reducing downtime and improving production quality.



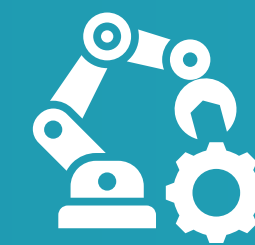
#### Intelligent Routing

Shiplystic ML selects the best delivery routes for faster and cost-efficient logistics.



#### Workflow Bots

Automated analytics create insights and reports without manual work.



#### Talent Automation

MentorAI automates grading and learning paths to improve employee skills.



# Services & Areas of Expertise



## Software

(SaaS • Products • Mobile • Auto-DevOps)

We build scalable SaaS platforms, enterprise products, and mobile applications.



## Data

(BI • Big Data • Automated Analytics Pipelines)

Business intelligence, big data engineering, and auto-analytics pipelines.



## Digital

(UX • Engagement • ML Personalization)

We design user-centric digital experiences and engagement systems.



## Cloud

(Managed • Consulting • AI Security Automation)

Cloud consulting, managed services, and AI-powered security automation.

error\_mod.use\_z = True  
selection at the end -add

# Software Services: Development



# Enterprise App Development

We build scalable enterprise applications with built-in automation and AI-driven workflows. Our ERP and CRM solutions include smart bots that handle operations automatically, improve accuracy, and speed up business processes across departments.

- **ERP Planning (Auto-Scheduling)**

Automated scheduling and planning for production, tasks, and resources.

- **HR (Bot-Onboarding)**

Bots streamline onboarding, documentation, and employee workflows.

- **Access Management (AI Security)**

AI-based authentication, permission controls, and secure access flows.

- **Operations & Workflow Automation**

Smart triggers that reduce manual processes across teams.



# Software Services: Maintenance

## ✓ Adaptive Maintenance

Automation bots keep systems updated with auto-refresh, regulatory compliance updates, and continuous improvements.

## ✓ Corrective Maintenance

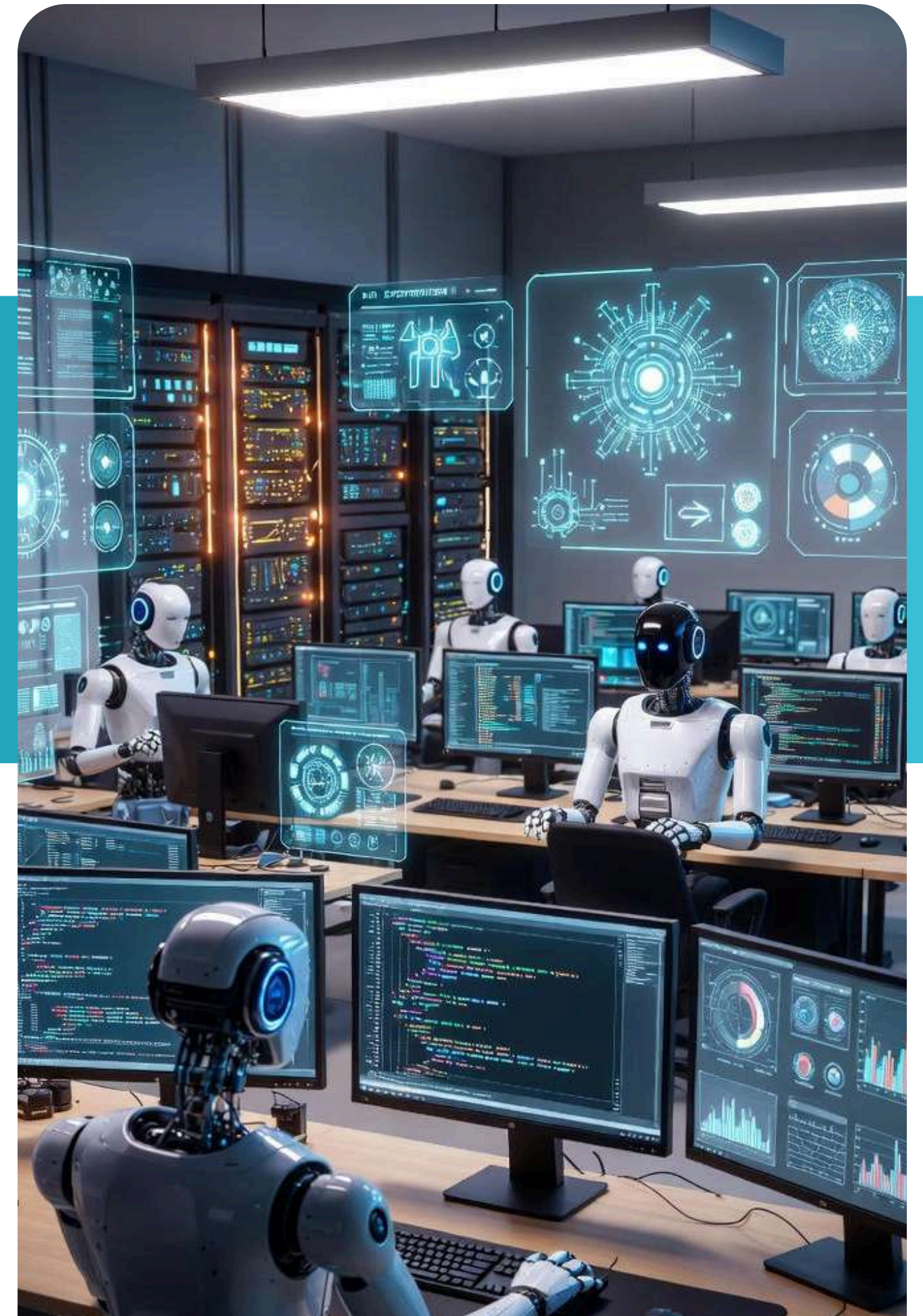
ML-powered error detection identifies issues early and triggers auto-fixes, reducing defects and improving stability.

## ✓ Perfective Maintenance

Performance optimization bots adjust workloads, tune systems, and enhance speed for a better user experience.

## ✓ Digital Maintenance

Cloud migration and modernization bots ensure secure transitions, optimized hosting, and minimal downtime.





Micraft Solutions Pvt. Ltd.

# SOLUTION APPROACH

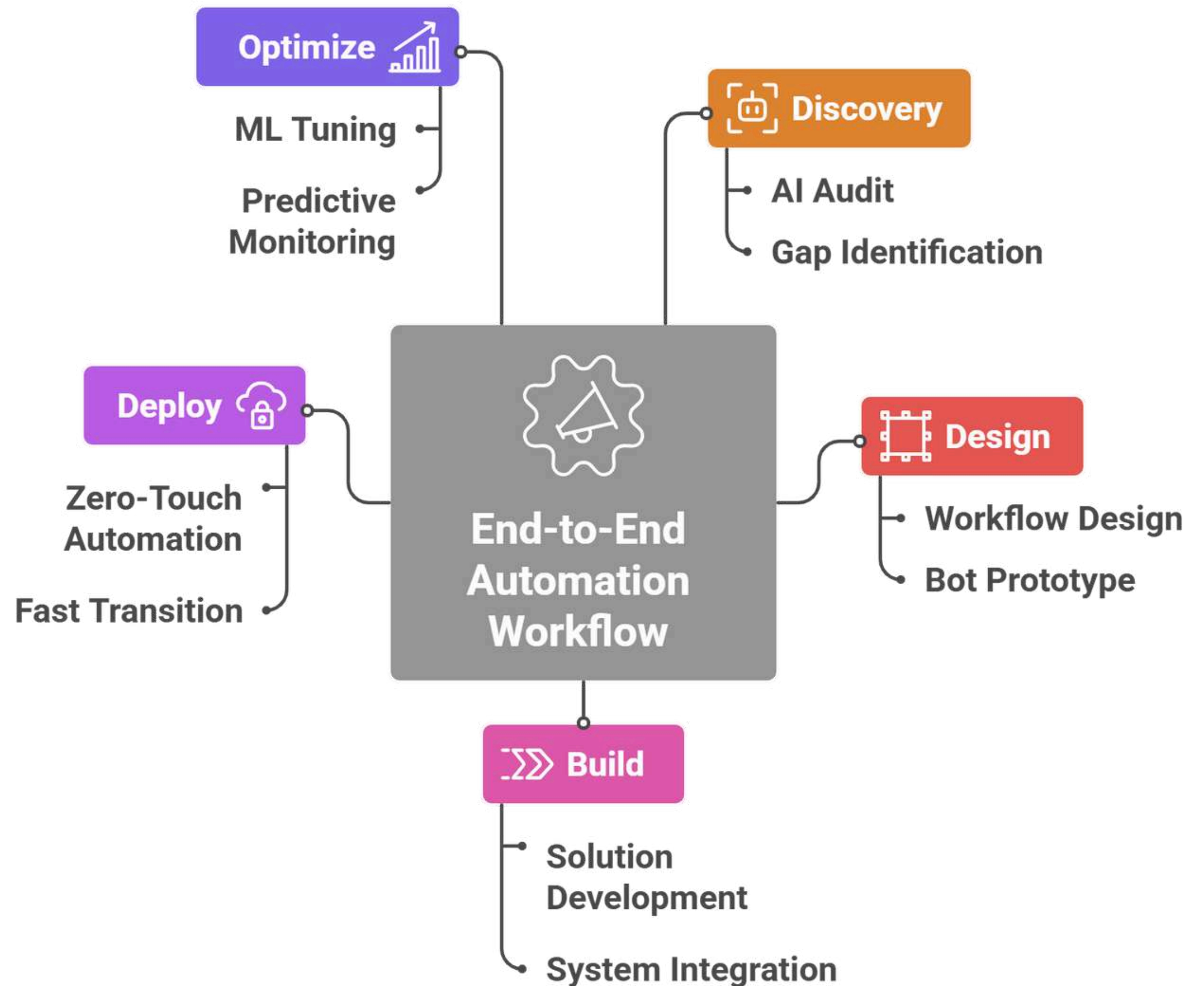
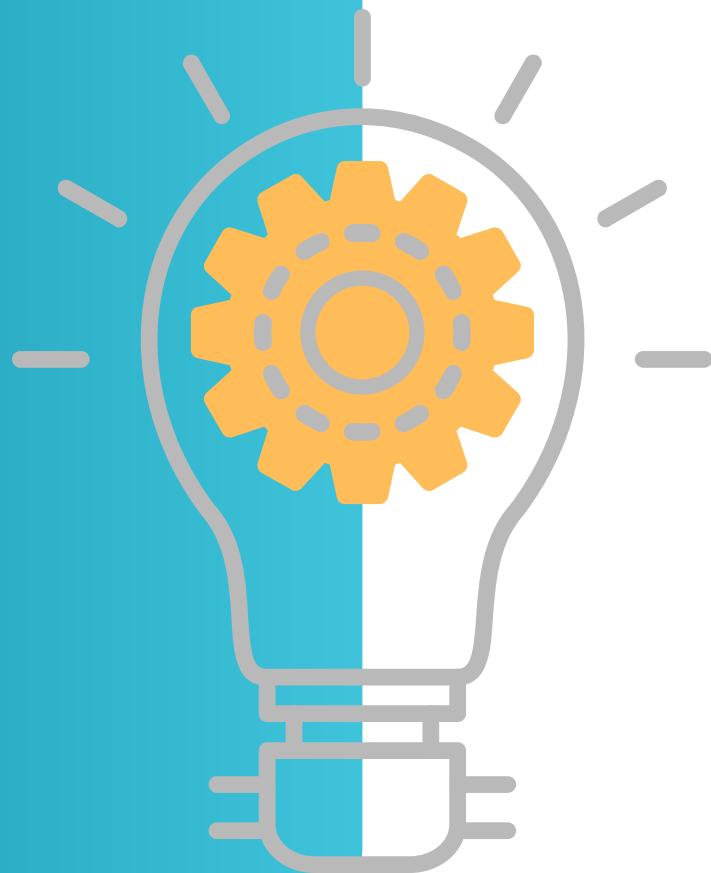
---



[www.micraft.co.in](http://www.micraft.co.in)

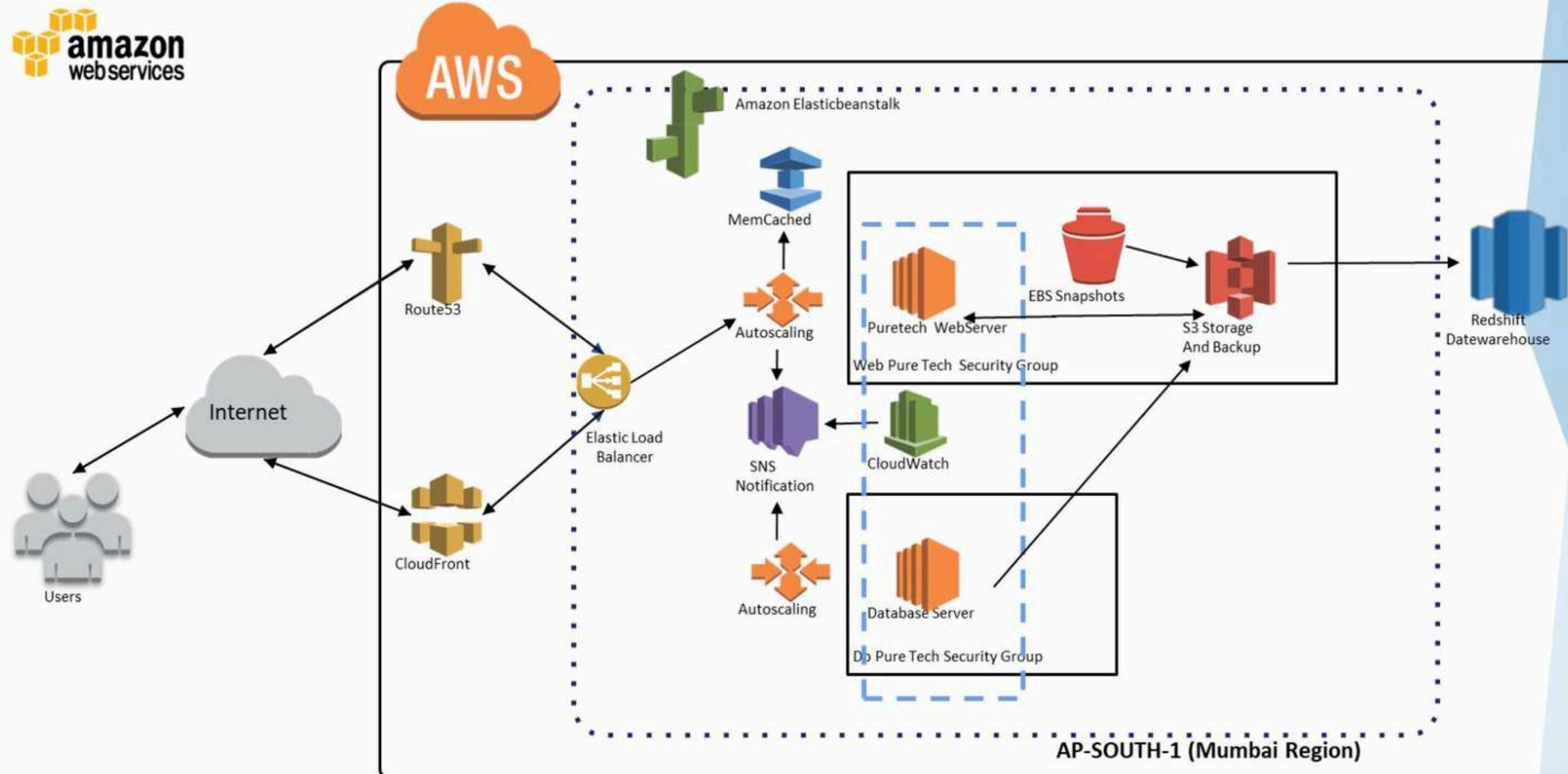
# SOLUTION APPROACH

A fully automated, globally scalable approach—mapped to your end-to-end transformation journey.



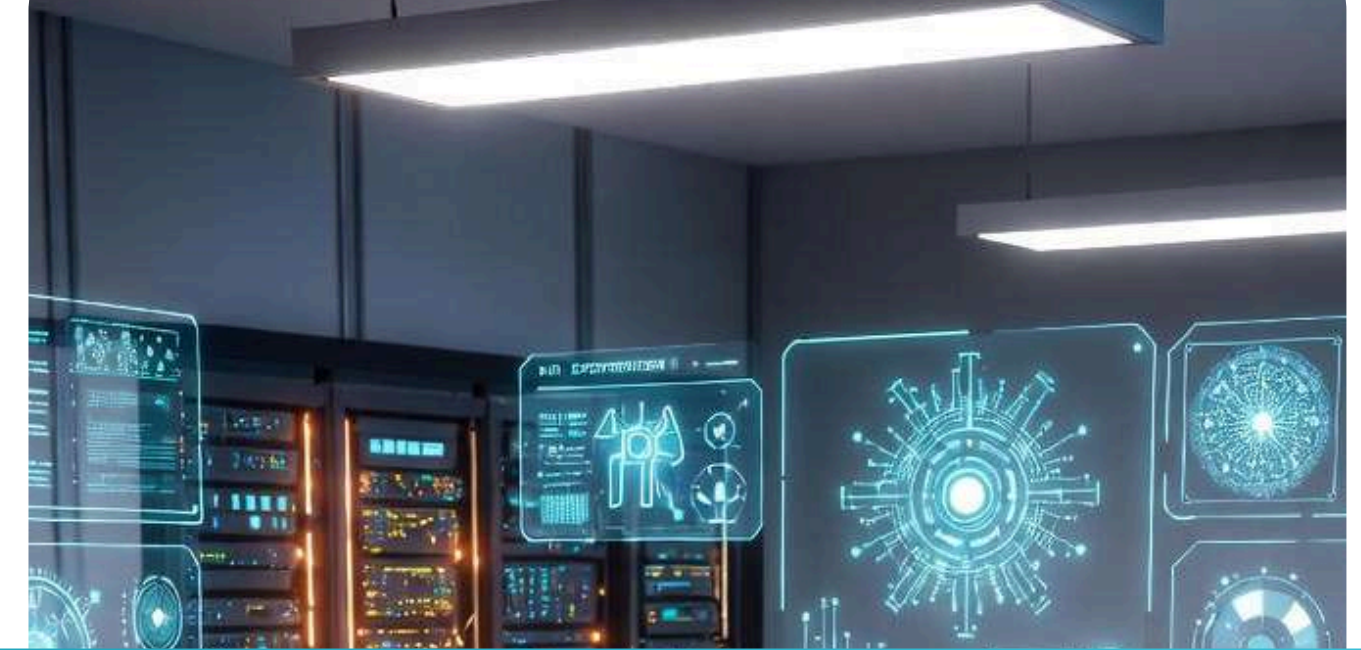
# TECHNICAL ARCHITECTURE

## Micraft Solutions Network Infrastructure Architecture



# Why Public Cloud?

Cloud-based labs provide on-demand training environments, ideal for testing, learning, and rapid experimentation.



## Cost – Auto-Optimization (OpEx)



Public cloud reduces upfront costs with pay-as-you-use models and automated cost-optimization tools.

01

## Scalability – ML-Predicted Expansion



Machine learning forecasts workload demand, enabling instant, auto-scaling resources without manual intervention.

02

## Flexibility – Config Bots



Config bots automate setup, deployment, and environment configuration, giving teams speed and agility.

03

## Training – Virtual Auto-Labs



Cloud-based labs provide on-demand training environments, ideal for testing, learning, and rapid experimentation.

04



# Automated Project Management

Week 1



## Auto-Communication

Automated updates, alerts, and notifications keep teams aligned.

Week 2



## Escalation Bots

Smart bots identify delays or risks and trigger auto-escalations to stakeholders.

Week 3



## Change Auto-Management

Automated handling of change requests, approvals, and version control.

Week 4



## Governance & Compliance

Built-in governance ensures visibility, compliance, and structured project control.

Week 5



## Agile AI Sprints

AI-driven sprint planning, workload estimation, and performance insights.



Mircraft Solutions Pvt. Ltd.

# FLAGSHIP PRODUCTS

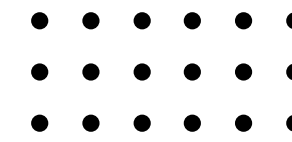
---

[www.mircraft.co.in](http://www.mircraft.co.in)



# Flagship Products:

## Automation Arsenal Powered by AI/ML



Globally deployed across 20+ countries — delivering 40% operational efficiency with recurring SaaS growth.



**Manufacturing Execution System**  
([micraftmes.com](http://micraftmes.com))



**Courier Management System**  
([Shiplystic.com](http://Shiplystic.com))



**Document Management System**  
([Doxcraft.co.in](http://Doxcraft.co.in))



**Visitor Management System**  
([Craftmate.co.in](http://Craftmate.co.in))



**Calibration Management System**  
[precisioncal.co.in](http://precisioncal.co.in)



**Warehouse Management System**  
([micraft.co.in](http://micraft.co.in))



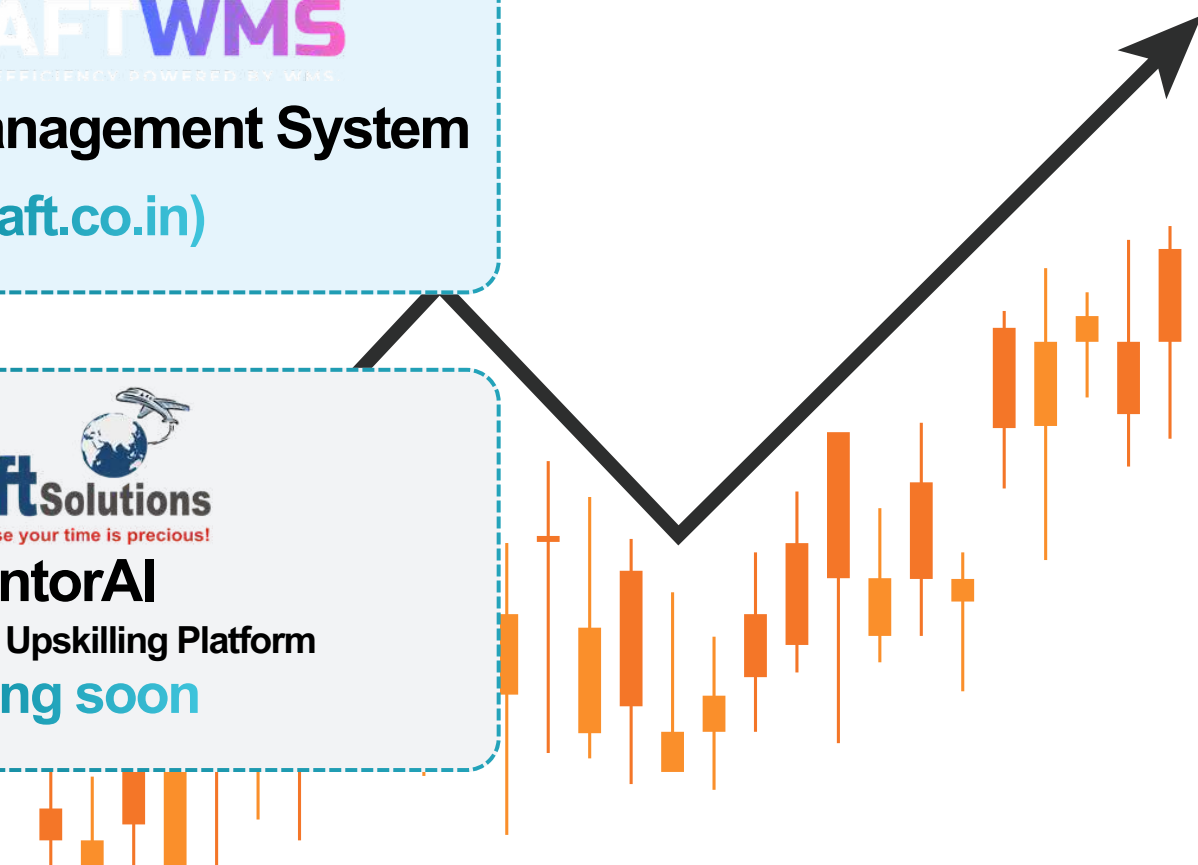
**Customer Relationship Management**  
([micraft.co.in](http://micraft.co.in))



**Transport Management System**  
([micraft.co.in](http://micraft.co.in))



**MentorAI**  
AI Learning & Upskilling Platform  
coming soon

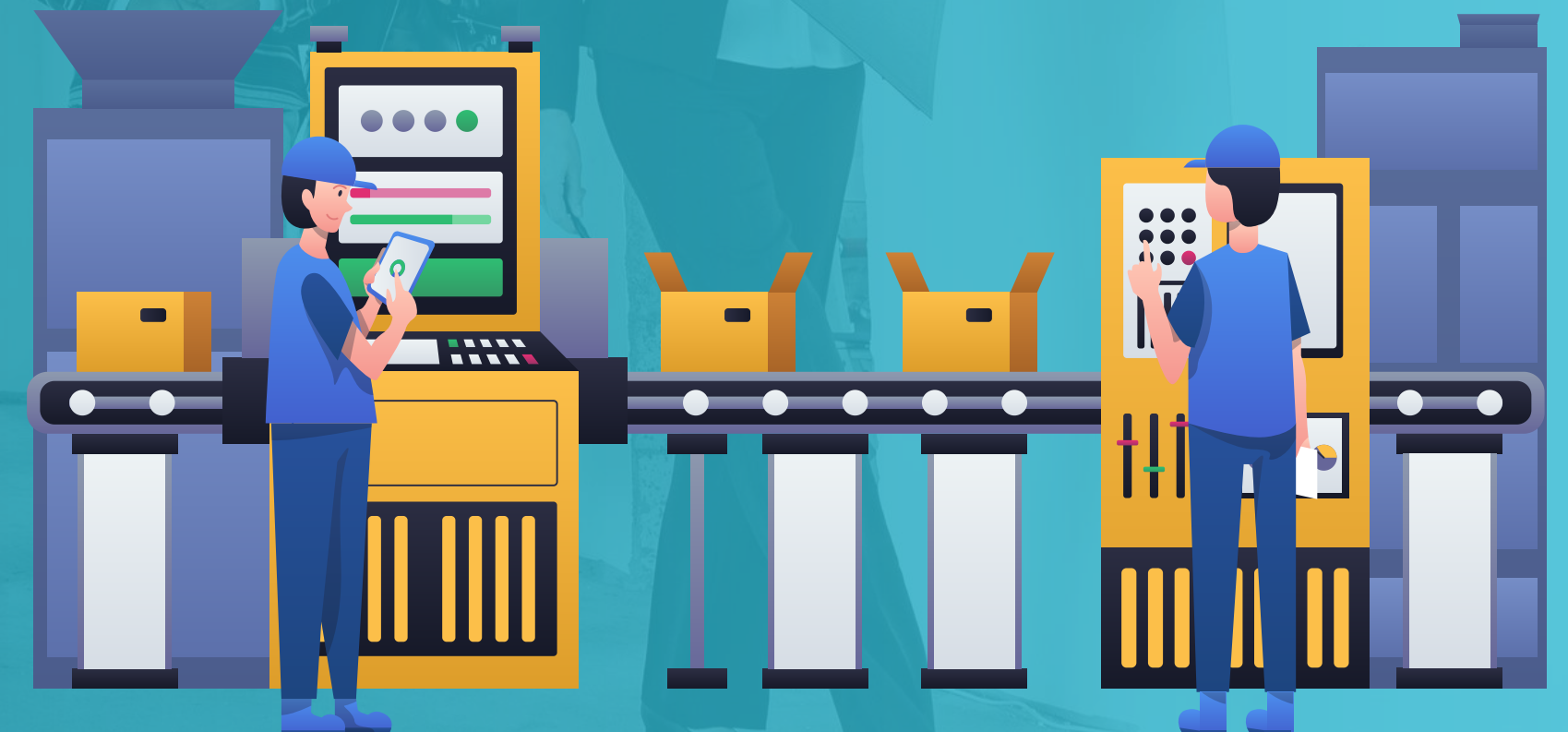




- ✓ **Auto-Production Scheduling**  
AI optimizes job sequencing, reducing machine idle time by 30%.
- ✓ **Real-Time Monitoring**  
IIoT-powered bots track machines, materials, and operators with instant anomaly alerts.
- ✓ **Predictive Maintenance**  
ML models forecast equipment failures, cutting downtime by 40%.
- ✓ **Quality Control Automation**  
AI-driven defect detection ensures compliance and zero-defect production.
- ✓ **Digital Twins**  
Simulate production lines for risk-free optimization, layout tuning, and cycle-time reduction.
- ✓ **Seamless Integrations**  
Connects with ERP, IIoT gateways, QMS, WMS, and factory automation systems for unified bot-driven workflows.

# Automate Manufacturing Excellence

Micraft MES is an Industry 4.0 manufacturing execution system that deploys AI-driven automation across the entire production lifecycle. From real-time scheduling to predictive maintenance and zero-defect quality control, Micraft MES ensures continuous, optimized, and intelligent operations—24/7.



# MES Automation Impact

Micraft MES delivers measurable operational excellence—boosting throughput, eliminating defects, reducing downtime, and scaling effortlessly across global factories. Perfect for manufacturers seeking AI-driven productivity and rapid ROI.



## 40% Downtime Reduction

AI/ML predictive maintenance prevents failures before they occur.



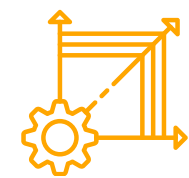
## 25% Throughput Boost

Auto-scheduling improves OEE and accelerates production.



## Zero-Defect Manufacturing

AI quality gates ensure complete compliance and traceability.



## Global Scalability

Trusted across 100+ factories worldwide.



- ✓ **Auto-Dispatch**  
Automatically assigns the best courier based on distance, load, and delivery priority.
- ✓ **Real-Time Tracking**  
Live GPS tracking with instant updates and customer notifications.
- ✓ **AI Route Optimization**  
Smart routing reduces fuel use by 25% and speeds up deliveries.
- ✓ **Invoicing Bots**  
Auto-generates invoices, handles COD updates, and manages reconciliation.
- ✓ **Rate Comparison**  
Shows the best courier rates instantly for cost savings on each shipment.
- ✓ **Unified Dashboard**  
Manages all couriers, orders, and tracking in one simple dashboard.

# Automate Logistics Delivery

Shiplystic CMS is a next-generation logistics automation platform that uses AI bots to manage the entire delivery lifecycle—right from dispatch to doorstep. Designed for e-commerce, courier networks, D2C brands, and enterprise supply chains, it eliminates manual routing, reduces delivery errors, and speeds up operations across all courier partners.



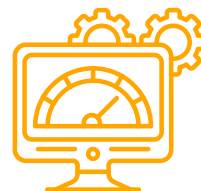
# CMS Automation Results

Shiplystic CMS transforms logistics operations by removing inefficiencies and enabling continuous, automated delivery intelligence. Businesses achieve faster turnarounds, measurable cost reductions, and highly accurate parcel visibility—scaling to thousands of daily shipments with ease.



## 25% Faster Deliveries

AI-optimized routing selects the quickest paths, reduces delays, and speeds up order completion.



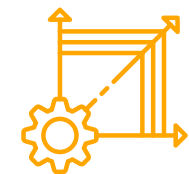
## 30% Cost Reductions

Smart courier selection, fuel-efficient routes, and automated billing reduce total logistics expenses.



## Error-Free Tracking (99% Accuracy)

Real-time GPS bots provide precise parcel visibility, minimizing misroutes and delivery errors.



## Scales to 10,000+ Shipments/Day

The system handles high-volume operations with ease—ideal for fast-growing brands and enterprise carriers.



- ✔ **Smart Role-Based Access**  
Automatically manages user permissions and logs every action, ensuring secure and controlled document access.
- ✔ **Auto-Backups on AWS S3**  
Documents are safely backed up in the cloud without any manual steps, keeping data protected and always available.
- ✔ **Workflow Automation**  
Built-in approval flows, compliance locks, and policy enforcement reduce manual processes and keep documents secure and organized.
- ✔ **OCR & Fast Search**  
AI-powered OCR scans documents and makes them fully searchable, helping teams find files instantly across any format.
- ✔ **Mobile & Multi-Format Ready**  
Supports all major file types and syncs across devices, allowing users to access documents anytime, anywhere.

# Automate Document Intelligence

Doxcraft transforms document management with AI-driven automation—making storage, access, and collaboration effortless. From OCR search to auto-versioning and secure cloud workflows, Doxcraft eliminates manual document chaos and creates a streamlined digital workspace.



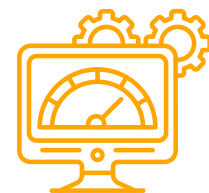
# Automation That Delivers

Doxcraft brings complete automation to document management—from upload to approval. It ensures every document is secure, organized, searchable, and accessible in real time. The platform helps teams work faster, reduces compliance risks, and provides complete control over sensitive information in a single, intelligent system.



## 50% Faster Document Retrieval

AI search helps teams find files quickly and work more efficiently.



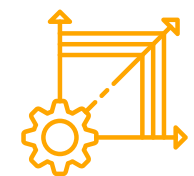
## Zero Breach Risk

Automated encryption and access controls keep documents fully secure.



## GDPR/HIPAA Ready

Built-in compliance features ensure safe handling of sensitive data.



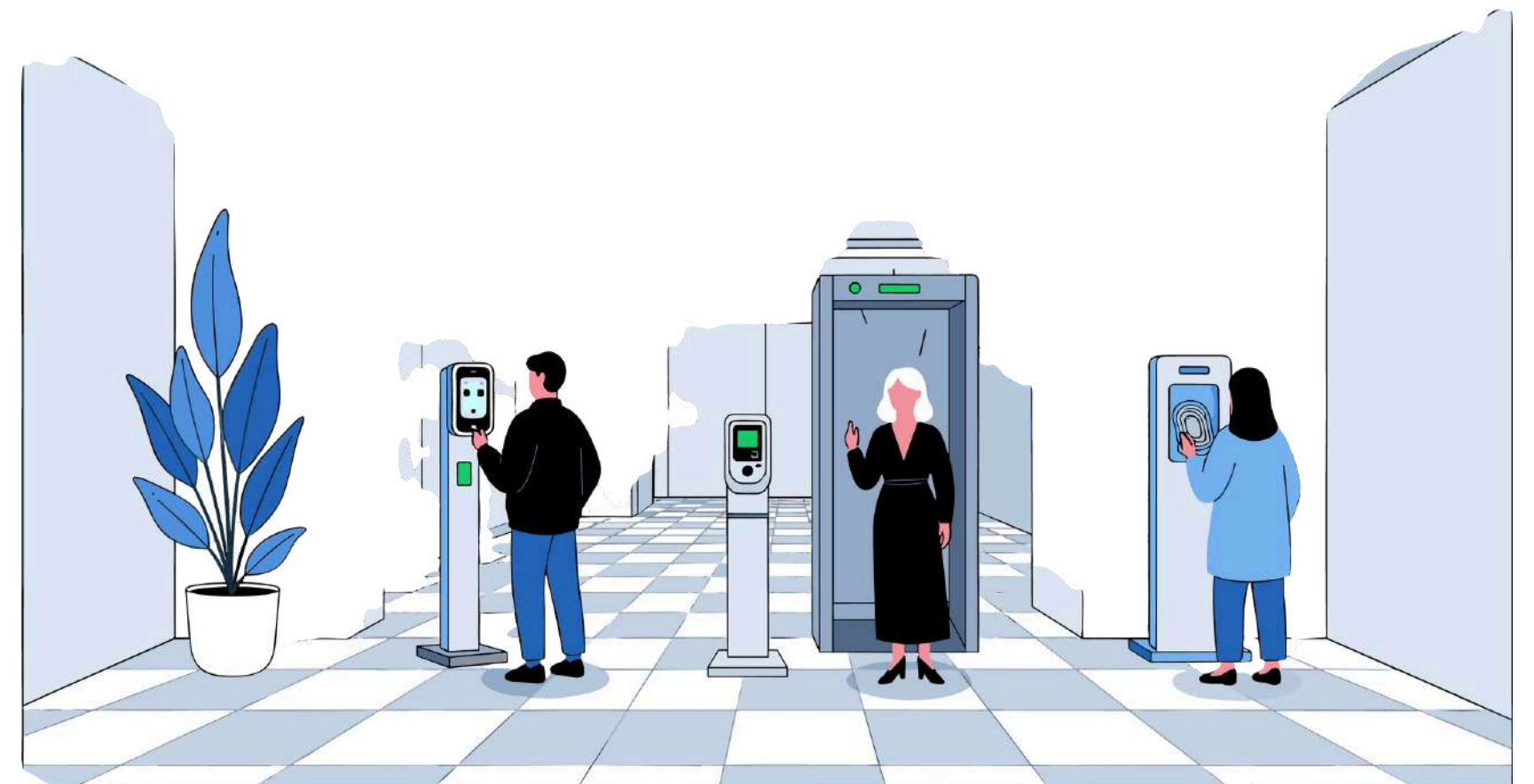
## Smooth, Organized Workflows

Replaces messy manual processes with simple, automated document flows.



# Automate **Visitor Entry** & Workplace Security

Craftmate transforms visitor management with smart automation—making entry, verification, and security effortless. From QR check-ins to facial recognition and auto-approvals, the system replaces manual registers with a fast, secure, fully digital gateway for offices, hospitals, industries, and high-security facilities.



- ✓ **QR-Based Check-Ins**  
Visitors scan and enter instantly with zero paperwork.
- ✓ **Facial Recognition**  
Smart identity verification for repeat or high-security visitors.
- ✓ **Auto-Approvals**  
Hosts receive instant notifications and auto-approve entries.
- ✓ **ID & Photo Capture**  
Visitor details recorded securely for compliance tracking.
- ✓ **Access Pass Automation**  
Auto-generated gatepasses with validity timers.
- ✓ **Real-Time Analytics**  
Live dashboards showing visitor flow, peak hours, and security logs.
- ✓ **Multi-Language Support**  
Smooth experience for diverse visitor groups.

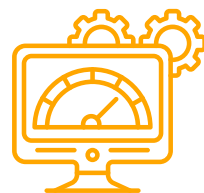
# VMS Automation **Benefits**

Craftmate VMS automates every step of visitor handling—from entry to exit—improving security, reducing queues, and giving organizations complete visibility and control over their premises.



## **60% Faster Entry Processing**

QR check-ins and auto-approvals speed up visitor flow instantly.



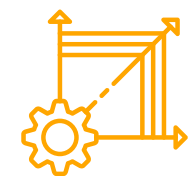
## **Enhanced Security**

Automated ID verification and audit logs ensure safe, controlled access.



## **Error-Free Data Capture**

OCR, photo scans, and digital records eliminate manual entry mistakes.



## **Scalable for Multi-Site Operations**

Easily manages visitors across multiple offices, plants, and healthcare facilities.



# Calibration Mastery Always **Audit-Ready**

PrecisionCal is a cloud-based calibration automation platform built for global labs and manufacturers. It automates calibration schedules, tracks every instrument, and ensures continuous compliance with ISO, FDA, and regulatory standards—removing manual effort, errors, and audit headaches.

- ✓ **AI Maintenance Predictions**  
Forecasts calibration requirements, highlights risk zones, and prevents equipment drift before it affects production.
- ✓ **Auto-Generated ISO/FDA Reports**  
Creates audit-ready calibration certificates, deviations, and traceability logs instantly, removing manual documentation work.
- ✓ **Multi-Site Dashboards & Real-Time Certificates**  
Monitor calibration status, asset health, and certificate validity across multiple labs, plants, or countries from one unified dashboard.
- ✓ **Automated Calibration Scheduling**  
Automatically schedules upcoming calibration tasks, sends alerts, and assigns technicians based on workload and asset criticality.
- ✓ **Automated Escalations**  
Sends alerts to supervisors when high-priority assets approach their calibration deadline or show abnormal trends.



# Compliance Without the Headache

PrecisionCal automates every part of the calibration lifecycle—keeping assets compliant, certificates updated, and audits stress-free with real-time intelligence.



## 20% Cost Reduction

Automation cuts missed calibrations and reduces manual work.



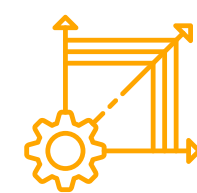
## 99% Uptime

Predictive insights keep assets running and prevent breakdowns.



## Full Manufacturing Lifecycle

Covers registration, calibration, certificates, and reporting.



## Audit-Ready Compliance

Real-time certificates and automated reports make audits fast and hassle-free.

# WMS/IMS: Automate Inventory & Fulfillment

- ✓ **Auto-Inventory Tracking:**  
RFID + ML for real-time, accurate stock counts.
- ✓ **Order Fulfillment Bots:**  
Zero-touch picking, routing, and packing workflows.
- ✓ **Stock Alert Automation**  
Predictive replenishment prevents shortages and delays.
- ✓ **Reporting Dashboards:**  
AI-generated insights for demand trends and warehouse KPIs.
- ✓ **Multi-Warehouse Sync:**  
Centralized cloud visibility across all locations.
- ✓ **Integration Hub:**  
Seamless links to ERP, courier systems, and fulfillment partners.



WMS/IMS is the backbone of fast-moving courier and e-commerce operations. AI-powered bots forecast stock levels, automate picking, and streamline fulfillment—ensuring accurate, lightning-fast warehouse performance with zero manual dependency.



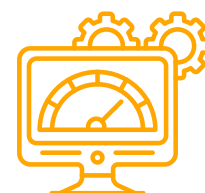
# WMS/IMS Automation Edge

PrecisionCal automates every part of the calibration lifecycle—keeping assets compliant, certificates updated, and audits stress-free with real-time intelligence.



## 50% Fewer Stockouts

ML forecasting ensures inventory stays balanced and ready.



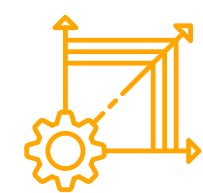
## 35% Faster Fulfillment

Automated picking and routing speed up order processing.



## 20% Lower Overstock Costs

Smart replenishment reduces excess inventory and holding costs.



## Scalable for E-Commerce Giants

Handles high-volume, multi-location operations effortlessly.

# CRM: Automate Customer Engagement & Conversions

CRM deploys AI-powered engagement bots that personalize communication, score leads automatically, and guide prospects through the sales funnel—boosting OEM dealer networks with smarter, hands-free follow-ups.

## Key Features:

- 01 **Workflow Automation:** Auto-manage lead journeys, reminders, and follow-ups.
- 02 **ML Lead Scoring:** Identifies high-intent customers for faster closing.
- 03 **Predictive Outreach:** AI suggests the right time and channel to contact customers.
- 04 **360° Customer Profiles:** Unified data for sales teams and dealers.



## Benefits

- Up to 40% higher conversion rates with personalized engagement.
- Reduced manual updates and fewer missed opportunities across dealer teams.



# TMS: Automate Fleet, Routing & Transport Efficiency

TMS uses ML-powered routing and fleet automation to streamline transport operations for OEMs. It optimizes delivery routes, balances vehicle loads, and predicts accurate ETAs—ensuring faster shipments, lower fuel costs, and smooth coordination across logistics networks.

## Key Features:

- 01 Load Balancing:** Distributes shipments intelligently across available vehicles.
- 02 Predictive ETAs:** AI calculates accurate arrival times based on traffic, weather, and route patterns.
- 03 ML Route Optimization:** Selects the fastest, most cost-efficient paths automatically.
- 04 Fleet Automation:** Tracks, schedules, and manages vehicles with minimal manual intervention.



## Benefits

- 30% improvement in transport efficiency through smarter routing and planning.
- Reduced delays and fuel usage, improving supply chain reliability for OEM dealers and distributors.



# MentorAI: Automate Training, Skills & Workforce Development

MentorAI uses GenAI-powered learning bots to deliver personalized training, auto-grade assessments, and close skill gaps across OEM plants, service centers, and dealer networks. It creates smarter, faster, more efficient teams with minimal training effort.

## Key Features:

- 01 Custom AI Mentors: Personalized learning paths designed for each role and skill level.
- 02 Auto-Grading Engine: Instantly scores tests, practical tasks, and assessments.
- 03 Skill Gap Automation: AI detects weak areas and assigns the right modules automatically.
- 04 ML Feedback Loops: Continuous improvement from intelligent progress tracking.



## Benefits

- 35% Faster Training with personalized, automated learning flows.
- 25% Higher Workforce Retention due to adaptive upskilling and engaging learning modules.



# Automation- Ready Engagement Models

Offshore | Onsite | Hybrid



Leverage 24/7 automation delivery through our global presence—powered from our 3 offices with round-the-clock engineering and AI bot support.



# Next Steps

## Automate to Unicorn: Your Path



### ▶ Auto-Audit Call

We review your processes and identify automation opportunities.

### ▶ Bot Demo

See your custom AI/automation bots in action—live walkthrough.

### ▶ Pilot Deploy

Launch a focused 30–60 day automation pilot for measurable ROI.

### ▶ Global Scale

Expand across teams, plants, and geographies with full automation rollout.

**Let's automate growth — book now.**

Automate With Us



# Thank you

**Mircraft: Automate Precision, Ignite Scale. Unlock your automation journey—your future starts here.**

[www.shiplystic.com](http://www.shiplystic.com) | [www.mircraftmes.com](http://www.mircraftmes.com) | [www.precisioncal.co.in](http://www.precisioncal.co.in) | [www.craftmate.co.in](http://www.craftmate.co.in) | [www.doxcraft.co.in](http://www.doxcraft.co.in)



[mircraft.co.in](http://mircraft.co.in)



+91 9356865559



[sales@mircraft.co.in](mailto:sales@mircraft.co.in)

603, White Square, Hinjawadi Phase 1, Pune 411057